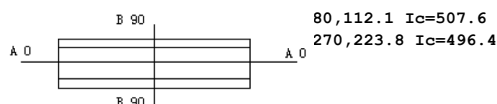
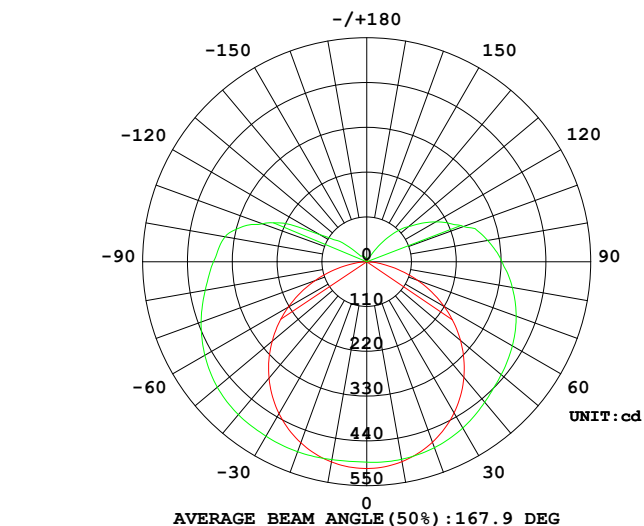


LUMINAIRE PHOTOMETRIC TEST REPORT

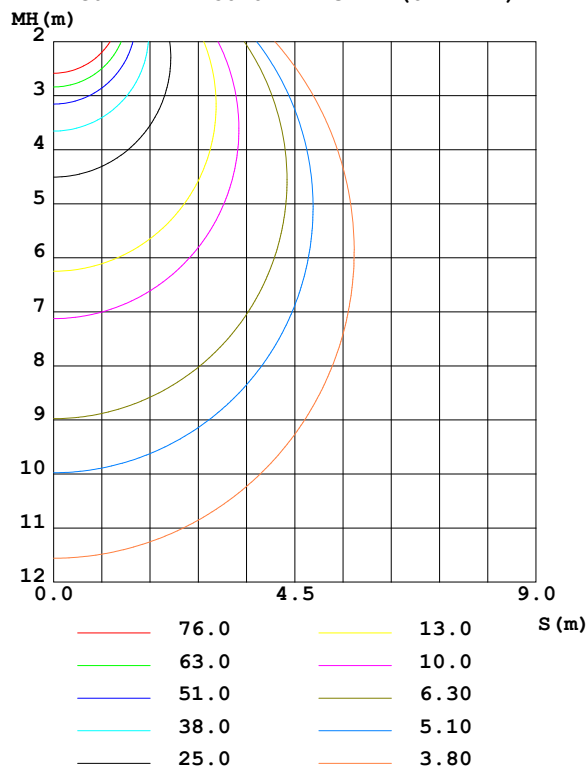
Test:U:230.18V I:0.2327A P:29.990W PF:0.5599 Freq:50.00Hz Lamp Flux:2747.41x1 lm		
NAME: LED T8 TUBE	TYPE:	WEIGHT:
SPEC.: 081200267	DIM.:	SERIAL No.:
MFR.: JIANG MEN MING WEI ELECTRIC CO.,LTD.	SUR.:	Shielding Angle:

DATA OF LAMP		PHOTOMETRIC DATA Eff: 91.61 lm/W			
MODEL		I _{max} (cd)	507.6	S/MH (C0/180)	1.26
NOMINAL POWER(W)	--	LOR (%)	100.0	S/MH (C90/270)	1.53
RATED VOLTAGE (V)	--	TOTAL FLUX (lm)	2747.4	η UP,DN (C0-180)	11.0,38.1
NOMINAL FLUX (lm)	2747.41	CIE CLASS	SEMI-D.	η UP,DN (C180-360)	10.1,40.8
LAMPS INSIDE	1	η up (%)	21.1	CIBSE SHR NOM	1.50
TEST VOLTAGE (V)	--	η down (%)	78.9	CIBSE SHR MAX	1.55

LUMINOUS INTENSITY DISTRIBUTION DIAGRAM



C0 PLANE ISOLUX DIAGRAM (UNIT:lx)



C Range: 0 - 360DEG
C Interval: 22.5DEG
Test Speed: 10.0deg/s
Temperature:25.3℃
Operators:
Test Date:2026-04-10

γ Range: 0 - 180DEG
γ Interval: 1.0DEG
Test System:EVERFINE GO-3000H_V1 SYSTEM V2.00.463
Humidity:65.0%
Test Distance:9.000m [K=1.0000]
Remarks:

ZONAL FLUX DIAGRAM

ZONAL FLUX DIAGRAM:

γ	C0	C45	C90	C135	C180	C225	C270	C315	γ	Φ zone	Φ total	%lum, lamp
10	498.3	494.5	492.5	489.5	499.1	493.8	493.2	488.4	0~ 10	47.21	47.21	1.72, 1.72
20	471.6	478.9	485.8	474.3	473.2	483.8	496.4	478.7	10~ 20	137.8	185.0	6.73, 6.73
30	428.7	452.5	471.5	448.4	430.7	465.4	494.6	460.0	20~ 30	216.5	401.5	14.6, 14.6
40	371.0	416.6	450.4	412.9	373.4	438.8	490.3	433.5	30~ 40	276.0	677.5	24.7, 24.7
50	300.6	373.8	431.2	370.2	303.1	408.6	479.0	403.6	40~ 50	312.3	989.8	36, 36
60	219.5	333.5	412.9	329.8	222.2	372.6	459.1	368.1	50~ 60	324.8	1315	47.8, 47.8
70	131.9	296.9	390.5	293.4	134.5	330.6	432.8	326.6	60~ 70	314.9	1630	59.3, 59.3
80	48.00	260.8	362.9	257.7	48.29	289.7	402.8	285.8	70~ 80	286.7	1916	69.7, 69.7
90	2.332	228.3	332.1	225.6	2.368	258.2	376.5	256.2	80~ 90	251.4	2168	78.9, 78.9
100	2.444	202.4	301.7	200.2	2.298	211.6	353.4	229.8	90~100	221.8	2389	87, 87
110	2.848	141.4	253.5	141.6	2.648	116.8	273.4	123.9	100~110	168.7	2558	93.1, 93.1
120	3.257	97.09	196.2	95.88	3.125	46.82	133.8	47.72	110~120	99.29	2657	96.7, 96.7
130	3.625	53.99	134.0	53.86	3.697	17.28	55.85	17.33	120~130	51.68	2709	98.6, 98.6
140	3.943	12.90	71.36	13.62	3.941	13.95	18.88	14.31	130~140	23.20	2732	99.5, 99.5
150	4.265	9.958	13.80	8.095	4.254	9.410	15.70	11.95	140~150	8.651	2741	99.8, 99.8
160	4.617	7.395	9.422	6.155	4.556	7.700	12.13	9.703	150~160	4.039	2745	99.9, 99.9
170	4.847	4.720	5.101	4.594	4.856	7.216	8.153	6.901	160~170	1.909	2747	100, 100
180	4.782	4.647	4.596	4.512	4.835	4.664	4.611	4.512	170~180	0.4983	2747	100, 100
DEG	LUMINOUS INTENSITY:cd									UNIT:lm		

Conical surface Flux(90deg): 830.58 lm

%lum = 30.2%

%lamp = 30.2%

Conical surface Flux(120deg): 1314.6 lm

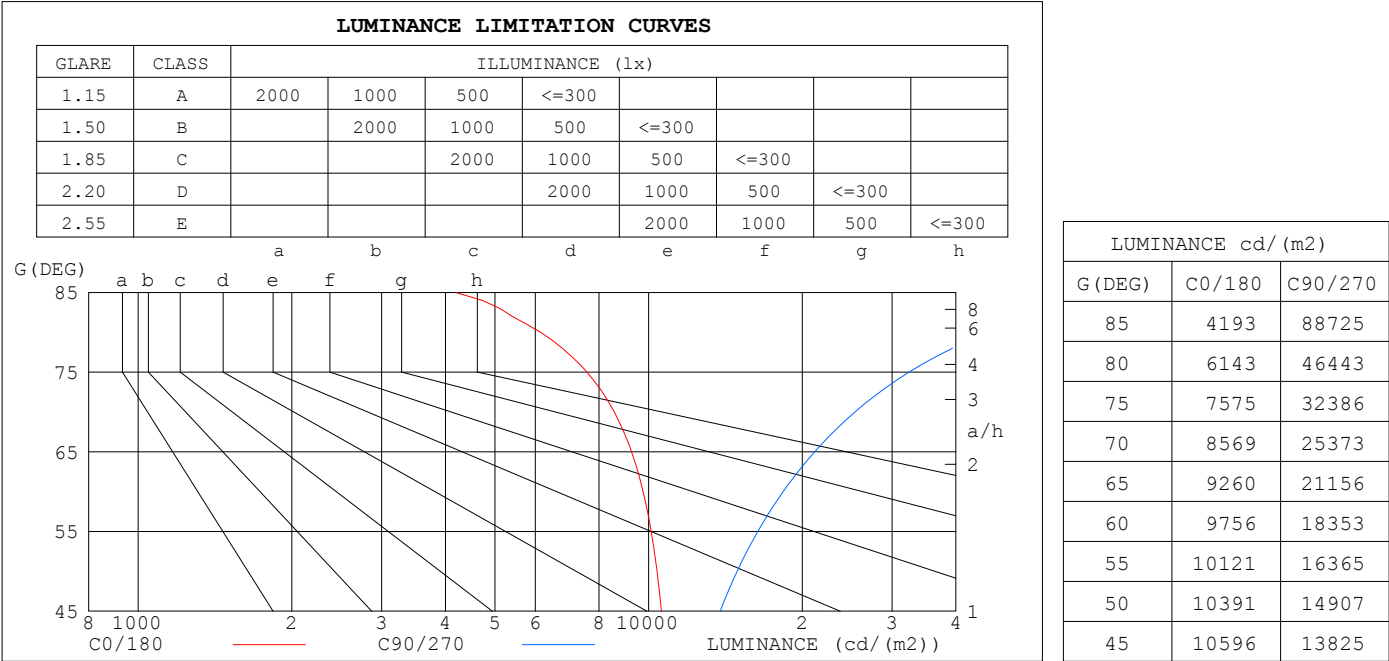
%lum = 47.8%

%lamp = 47.8%

C Range: 0 - 360DEG
 C Interval: 22.5DEG
 Test Speed: 10.0deg/s
 Temperature:25.3℃
 Operators:
 Test Date:2026-04-10

γ Range: 0 - 180DEG
 γ Interval: 1.0DEG
 Test System:EVERFINE GO-3000H_V1 SYSTEM V2.00.463
 Humidity:65.0%
 Test Distance:9.000m [K=1.0000]
 Remarks:

LUMINANCE LIMITATION CURVES

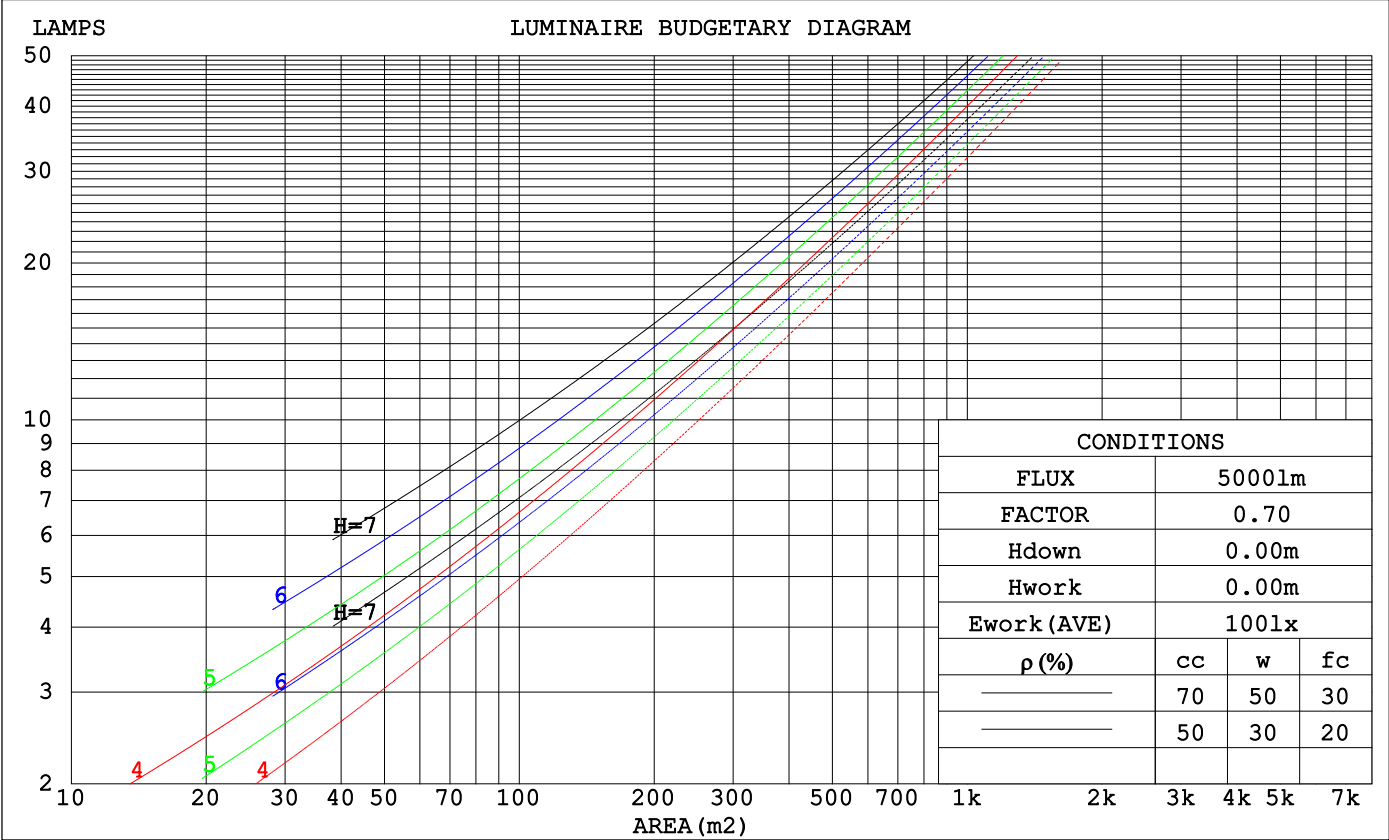


C Range: 0 - 360DEG
C Interval: 22.5DEG
Test Speed: 10.0deg/s
Temperature:25.3°C
Operators:
Test Date:2026-04-10

γ Range: 0 - 180DEG
γ Interval: 1.0DEG
Test System:EVERFINE GO-3000H_V1 SYSTEM V2.00.463
Humidity:65.0%
Test Distance:9.000m [K=1.0000]
Remarks:

CU AND LUMINAIRE BUDGETARY ESTIMATE DIAGRAM

pcc	80%			70%			50%			30%			10%			0
pw	50%	30%	10%	50%	30%	10%	50%	30%	10%	50%	30%	10%	50%	30%	10%	0
pfc	20%			20%			20%			20%			20%			0
RCR	RCR:Room Cavity Ratio						Coefficients of Utilization(CU)									
0.0	1.14	1.14	1.14	1.09	1.09	1.09	.99	.99	.99	.91	.91	.91	.83	.83	.83	.79
1.0	.94	.88	.83	.89	.84	.79	.81	.77	.73	.73	.70	.67	.66	.64	.61	.58
2.0	.80	.71	.64	.76	.68	.62	.69	.63	.57	.62	.57	.53	.56	.52	.49	.45
3.0	.69	.59	.52	.65	.57	.50	.59	.52	.46	.54	.48	.43	.48	.44	.40	.36
4.0	.60	.50	.43	.57	.48	.42	.52	.45	.39	.47	.41	.36	.43	.37	.33	.30
5.0	.53	.43	.36	.51	.42	.35	.46	.39	.33	.42	.36	.31	.38	.33	.28	.25
6.0	.48	.38	.31	.45	.37	.30	.41	.34	.28	.38	.31	.26	.34	.29	.24	.22
7.0	.43	.34	.27	.41	.32	.26	.37	.30	.25	.34	.28	.23	.31	.26	.21	.19
8.0	.39	.30	.24	.37	.29	.23	.34	.27	.22	.31	.25	.20	.28	.23	.19	.17
9.0	.35	.27	.21	.34	.26	.21	.31	.24	.19	.29	.23	.18	.26	.21	.17	.15
10.0	.33	.24	.19	.31	.24	.19	.29	.22	.17	.27	.21	.16	.24	.19	.15	.13



C Range: 0 - 360DEG
C Interval: 22.5DEG
Test Speed: 10.0deg/s
Temperature:25.3℃
Operators:
Test Date:2026-04-10

γ Range: 0 - 180DEG
γ Interval: 1.0DEG
Test System:EVERFINE GO-3000H_V1 SYSTEM V2.00.463
Humidity:65.0%
Test Distance:9.000m [K=1.0000]
Remarks:

WEC AND CCEC

pcc	80%			70%			50%			30%			10%			0	
pw	50%	30%	10%	50%	30%	10%	50%	30%	10%	50%	30%	10%	50%	30%	10%	0	
pfc	20%			20%			20%			20%			20%			0	
RCR	RCR:Room Cavity Ratio						Wall Exitance Coefficients (WEC)										
0.0																	
1.0	.409	.233	.074	.396	.226	.072	.370	.212	.068	.346	.200	.064	.324	.188	.061		
2.0	.348	.191	.058	.335	.185	.057	.312	.173	.054	.290	.163	.051	.271	.153	.048		
3.0	.306	.163	.049	.294	.158	.047	.273	.148	.045	.254	.139	.043	.236	.130	.040		
4.0	.273	.142	.042	.263	.138	.041	.244	.129	.039	.226	.121	.037	.210	.114	.035		
5.0	.247	.126	.036	.238	.122	.036	.221	.115	.034	.204	.108	.032	.189	.101	.030		
6.0	.226	.113	.032	.217	.110	.032	.201	.103	.030	.187	.097	.028	.173	.091	.027		
7.0	.208	.103	.029	.200	.100	.028	.185	.094	.027	.172	.088	.026	.159	.083	.024		
8.0	.192	.094	.026	.185	.091	.026	.172	.086	.024	.159	.081	.023	.147	.076	.022		
9.0	.179	.086	.024	.172	.084	.024	.160	.079	.022	.148	.074	.021	.137	.070	.020		
10.0	.167	.080	.022	.161	.078	.022	.150	.073	.021	.139	.069	.020	.129	.065	.019		

pcc	80%			70%			50%			30%			10%			0	
pw	50%	30%	10%	50%	30%	10%	50%	30%	10%	50%	30%	10%	50%	30%	10%	0	
pfc	20%			20%			20%			20%			20%			0	
RCR	RCR:Room Cavity Ratio						Ceiling Cavity Exitance Coefficients (CCEC)										
0.0	.351	.351	.351	.300	.300	.300	.205	.205	.205	.118	.118	.118	.038	.038	.038		
1.0	.349	.317	.289	.299	.272	.248	.204	.187	.172	.118	.108	.100	.038	.035	.032		
2.0	.343	.295	.254	.294	.254	.220	.201	.176	.153	.116	.102	.090	.037	.033	.029		
3.0	.335	.279	.233	.288	.240	.202	.197	.167	.142	.114	.098	.084	.037	.032	.027		
4.0	.328	.266	.220	.281	.230	.191	.193	.160	.134	.112	.094	.079	.036	.031	.026		
5.0	.320	.257	.210	.275	.222	.183	.189	.155	.129	.110	.091	.077	.035	.030	.025		
6.0	.312	.249	.203	.268	.215	.177	.185	.151	.125	.107	.089	.074	.035	.029	.025		
7.0	.305	.242	.198	.262	.210	.173	.181	.147	.122	.105	.087	.073	.034	.028	.024		
8.0	.298	.237	.194	.257	.205	.170	.178	.144	.120	.103	.085	.072	.033	.028	.024		
9.0	.292	.232	.192	.251	.201	.167	.174	.142	.119	.101	.084	.071	.033	.027	.023		
10.0	.286	.228	.189	.246	.198	.165	.171	.139	.117	.100	.082	.070	.032	.027	.023		

C Range: 0 - 360DEG
C Interval: 22.5DEG
Test Speed: 10.0deg/s
Temperature:25.3°C
Operators:
Test Date:2026-04-10

γ Range: 0 - 180DEG
γ Interval: 1.0DEG
Test System:EVERFINE GO-3000H_V1 SYSTEM V2.00.463
Humidity:65.0%
Test Distance:9.000m [K=1.0000]
Remarks:

UGR(Unified Glare Rating) Table

ceiling/cavity	0.7	0.7	0.5	0.5	0.3	0.7	0.7	0.5	0.5	0.3
walls	0.5	0.3	0.5	0.3	0.3	0.5	0.3	0.5	0.3	0.3
working plane	0.2	0.2	0.2	0.2	0.2	0.2	0.2	0.2	0.2	0.2
Room dimensions	Viewed crosswise					Viewed endwise				
x = 2H y = 2H	19.1	20.5	19.7	21.1	21.7	21.7	23.0	22.2	23.6	24.2
3H	20.7	21.9	21.3	22.5	23.2	24.7	26.0	25.3	26.5	27.2
4H	21.3	22.5	21.9	23.1	23.8	26.4	27.6	27.0	28.2	28.9
6H	21.7	22.9	22.4	23.5	24.2	28.2	29.4	28.9	30.0	30.7
8H	21.9	23.0	22.5	23.6	24.3	29.3	30.4	29.9	31.0	31.8
12H	21.9	23.0	22.6	23.6	24.4	30.5	31.5	31.1	32.2	32.9
4H 2H	20.5	21.7	21.1	22.3	23.0	22.3	23.5	22.9	24.1	24.8
3H	22.3	23.4	23.0	24.0	24.8	25.5	26.6	26.2	27.2	28.0
4H	23.2	24.2	23.8	24.8	25.6	27.4	28.4	28.1	29.1	29.8
6H	23.9	24.7	24.6	25.4	26.2	29.5	30.4	30.2	31.1	31.9
8H	24.1	24.9	24.8	25.6	26.5	30.7	31.5	31.4	32.2	33.0
12H	24.3	25.0	25.0	25.8	26.6	32.0	32.8	32.7	33.5	34.3
8H 4H	24.6	25.4	25.3	26.1	26.9	27.8	28.6	28.5	29.3	30.1
6H	25.7	26.4	26.5	27.2	28.0	30.2	30.9	30.9	31.6	32.5
8H	26.2	26.9	27.0	27.6	28.5	31.6	32.2	32.4	33.0	33.9
12H	26.7	27.2	27.4	28.0	28.9	33.2	33.8	34.0	34.5	35.4
12H 4H	25.1	25.8	25.8	26.5	27.4	27.8	28.6	28.5	29.3	30.1
6H	26.5	27.1	27.2	27.9	28.8	30.4	31.0	31.1	31.7	32.6
8H	27.2	27.8	28.0	28.6	29.5	31.9	32.4	32.6	33.2	34.1
Variations with the observer position at spacings(CIE Pub.117):										
S = 1.0H	+ 0.1 / - 0.1					+ 0.1 / - 0.1				
1.5H	+ 0.2 / - 0.3					+ 0.2 / - 0.3				
2.0H	+ 0.2 / - 0.4					+ 0.3 / - 0.4				

CIE Pub.117, 2747 lm Total Lamp Luminous Flux Corrected ($8\log(F/F_0) = 3.5$)Area: 0.045 m²

C Range: 0 - 360DEG
C Interval: 22.5DEG
Test Speed: 10.0deg/s
Temperature:25.3°C
Operators:
Test Date:2026-04-10

γ Range: 0 - 180DEG
 γ Interval: 1.0DEG
Test System:EVERFINE GO-3000H_V1 SYSTEM V2.00.463
Humidity:65.0%
Test Distance:9.000m [K=1.0000]
Remarks:

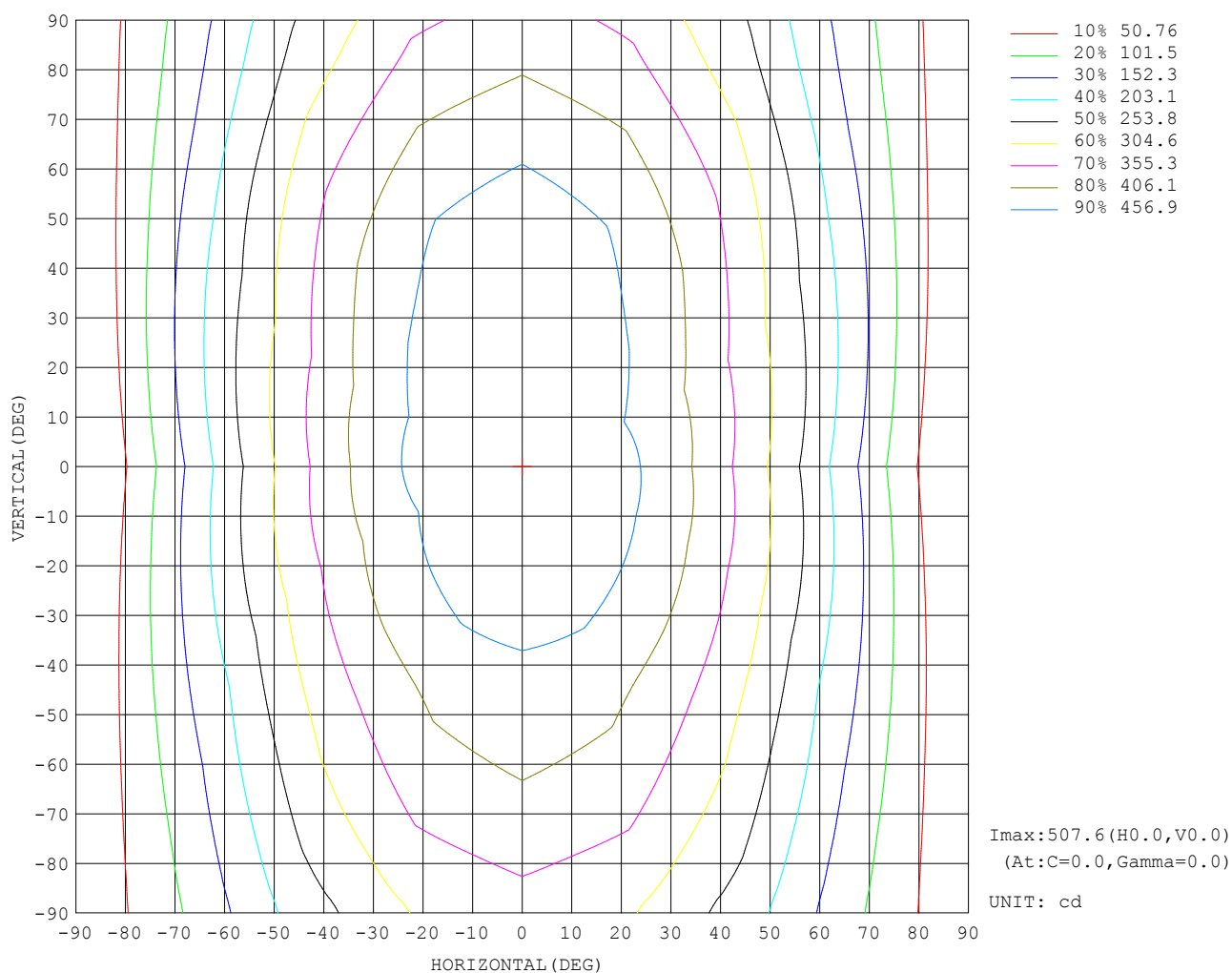
UTILIZATION FACTORS TABLE

REFLECTANCE										
Ceiling	0.8	0.8	0.8	0.7	0.7	0.7	0.5	0.5	0.5	0
Walls	0.7	0.5	0.3	0.7	0.5	0.3	0.7	0.5	0.3	0
Working plane	0.2	0.2	0.2	0.2	0.2	0.2	0.2	0.2	0.2	0
ROOM INDEX	UTILIZATION FACTORS (PERCENT) $k(RI) \times RCR = 5$									
$k = 0.60$	45	32	25	44	32	25	42	31	24	18
0.80	54	41	32	53	40	32	50	38	31	23
1.00	62	48	39	60	47	39	56	48	38	29
1.25	69	55	46	66	54	45	62	51	44	34
1.50	74	61	52	71	59	51	66	56	48	38
2.00	81	69	60	78	67	59	72	63	56	44
2.50	86	75	66	82	72	64	76	67	61	48
3.00	90	80	71	86	77	69	79	71	65	51
4.00	95	86	79	90	83	76	83	77	71	56
5.00	98	90	84	93	87	81	85	80	75	59
ROOM INDEX	UF (total)									Direct
According to DIN EN 13032-2 2004			Suspended					SHRNOM = 1.25		

C Range: 0 - 360DEG
 C Interval: 22.5DEG
 Test Speed: 10.0deg/s
 Temperature: 25.3°C
 Operators:
 Test Date: 2026-04-10

γ Range: 0 - 180DEG
 γ Interval: 1.0DEG
 Test System: EVERFINE GO-3000H_V1 SYSTEM V2.00.463
 Humidity: 65.0%
 Test Distance: 9.000m [K=1.0000]
 Remarks:

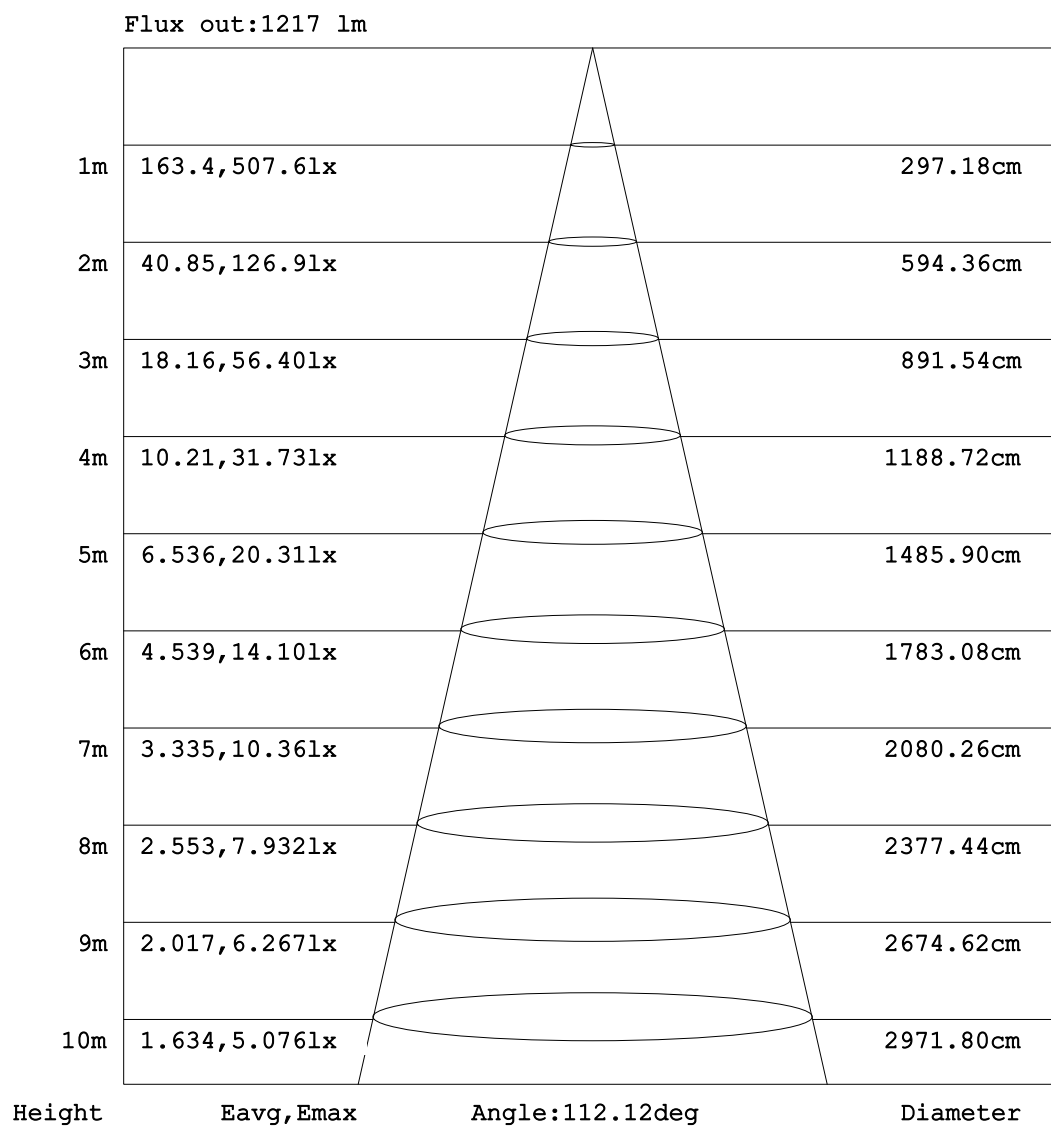
ISOCANDELA DIAGRAM



C Range: 0 - 360DEG
C Interval: 22.5DEG
Test Speed: 10.0deg/s
Temperature: 25.3°C
Operators:
Test Date: 2026-04-10

γ Range: 0 - 180DEG
γ Interval: 1.0DEG
Test System: EVERFINE GO-3000H_V1 SYSTEM V2.00.463
Humidity: 65.0%
Test Distance: 9.000m [K=1.0000]
Remarks:

AAI Figure

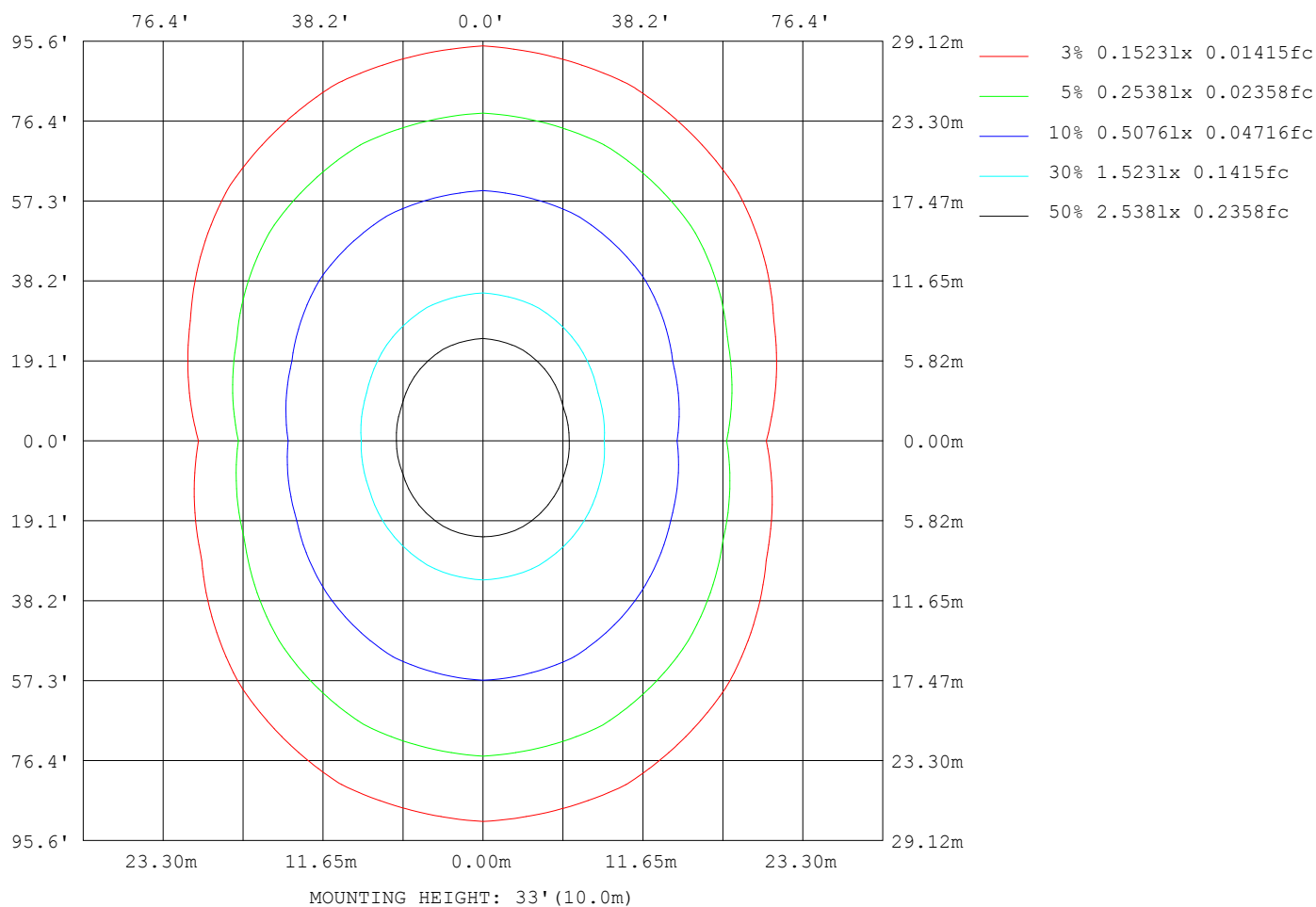


Note:The Curves indicate the illuminated area and the average illumination when the luminaire is at different distance.

C Range: 0 - 360DEG
 C Interval: 22.5DEG
 Test Speed: 10.0deg/s
 Temperature:25.3°C
 Operators:
 Test Date:2026-04-10

γ Range: 0 - 180DEG
 γ Interval: 1.0DEG
 Test System:EVERFINE GO-3000H_V1 SYSTEM V2.00.463
 Humidity:65.0%
 Test Distance:9.000m [K=1.0000]
 Remarks:

ISOLUX DIAGRAM



C Range: 0 - 360DEG
C Interval: 22.5DEG
Test Speed: 10.0deg/s
Temperature: 25.3°C
Operators:
Test Date: 2026-04-10

γ Range: 0 - 180DEG
γ Interval: 1.0DEG
Test System: EVERFINE GO-3000H_V1 SYSTEM V2.00.463
Humidity: 65.0%
Test Distance: 9.000m [K=1.0000]
Remarks:

LED Avg.L Report

Test:U:230.18V I:0.2327A P:29.990W PF:0.5599 Freq:50.00Hz Lamp Flux:2747.41x1 lm		
NAME: LED T8 TUBE	TYPE:	WEIGHT:
SPEC.: 081200267	DIM.:	SERIAL No.:
MFR.: JIANG MEN MING WEI ELECTRIC CO.,LTD.	SUR.:	Shielding Angle:

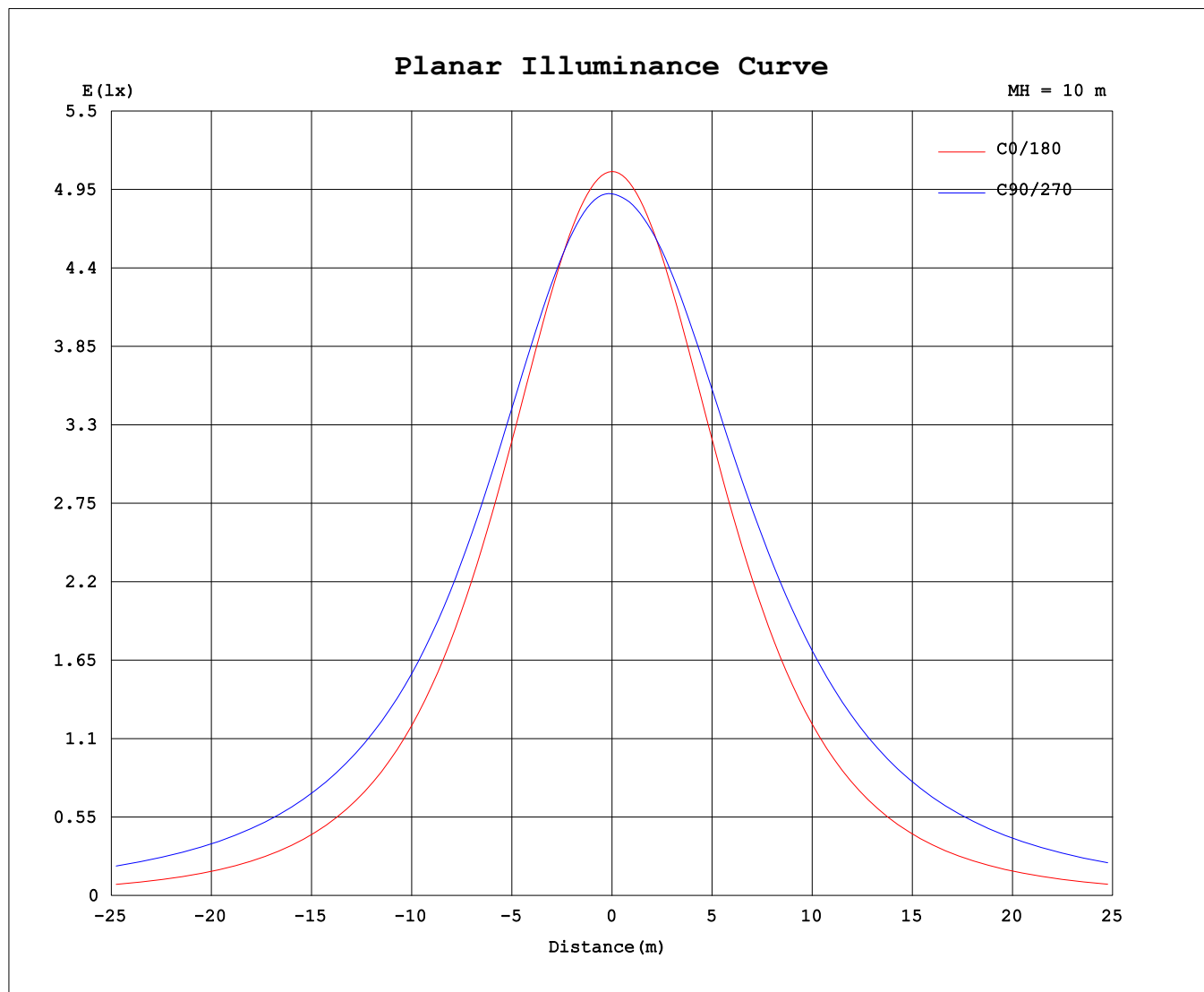
AvgL	cd/m2
L_0~180 (65) av	9330
L_0~180 (75) av	7673
L_0~180 (85) av	4183
L_90~270 (65) av	22316
L_90~270 (75) av	34131
L_90~270 (85) av	93960
L_45 (65) av	17432
L_45 (75) av	25095
L_45 (85) av	65472

Standard: GB/T 29293-2012

C Range: 0 - 360DEG
C Interval: 22.5DEG
Test Speed: 10.0deg/s
Temperature:25.3℃
Operators:
Test Date:2026-04-10

γ Range: 0 - 180DEG
γ Interval: 1.0DEG
Test System:EVERFINE GO-3000H_V1 SYSTEM V2.00.463
Humidity:65.0%
Test Distance:9.000m [K=1.0000]
Remarks:

Planar Illuminance Curve



C Range: 0 - 360DEG
C Interval: 22.5DEG
Test Speed: 10.0deg/s
Temperature: 25.3°C
Operators:
Test Date: 2026-04-10

γ Range: 0 - 180DEG
γ Interval: 1.0DEG
Test System: EVERFINE GO-3000H_V1 SYSTEM V2.00.463
Humidity: 65.0%
Test Distance: 9.000m [K=1.0000]
Remarks:

LUMINOUS DISTRIBUTION INTENSITY DATA

Table--1

UNIT: cd

C (DEG) γ (DEG)	0	22.5	45	67.5	90	112.5	135	157.5	180	202.5	225	247.5	270	292.5	315	337.5			
0	508	502	498	495	492	492	492	493	508	502	498	495	492	492	492	493			
5	505	501	498	496	493	493	493	492	506	499	496	494	492	491	491	490			
10	498	495	495	494	492	492	490	487	499	493	494	494	493	492	488	485			
15	487	486	488	491	490	488	483	478	488	484	490	495	495	492	484	476			
20	472	473	479	485	486	483	474	465	473	472	484	494	496	491	479	464			
25	452	457	467	477	480	475	463	449	454	456	476	491	496	488	470	448			
30	429	437	453	468	471	465	448	429	431	438	465	487	495	484	460	430			
35	402	414	436	456	462	454	432	407	404	416	453	482	493	479	448	409			
40	371	388	417	443	450	440	413	381	373	392	439	477	490	474	433	386			
45	337	359	396	429	440	427	392	353	340	366	424	470	486	467	419	360			
50	301	329	374	417	431	414	370	323	303	338	409	461	479	458	404	332			
55	261	297	352	405	422	403	349	291	264	309	392	450	470	447	387	303			
60	220	263	334	394	413	391	330	258	222	279	373	436	459	434	368	274			
65	176	229	315	381	402	379	311	225	179	251	352	422	446	419	348	246			
70	132	197	297	368	391	366	293	192	134	221	331	406	433	404	327	217			
75	88.2	170	279	354	377	351	275	165	90.5	190	310	390	418	387	306	187			
80	48.0	145	261	338	363	336	258	141	48.3	160	290	374	403	371	286	158			
85	16.4	125	244	323	348	321	242	121	16.4	137	272	359	389	357	269	135			
90	2.33	109	228	307	332	305	226	106	2.37	123	258	346	377	344	256	121			
95	2.28	99.7	215	293	318	291	213	96.5	2.32	106	244	335	365	334	247	112			
100	2.44	87.9	202	277	302	276	200	85.0	2.30	69.5	212	321	353	322	230	83.0			
105	2.63	55.6	188	262	285	260	185	54.7	2.43	35.3	138	285	323	289	195	41.1			
110	2.85	49.7	141	211	254	209	142	48.5	2.65	14.7	117	173	273	194	124	16.1			
115	3.05	32.6	129	180	224	181	130	32.3	2.89	12.4	95.3	101	225	162	96.3	13.7			
120	3.26	13.1	97.1	163	196	161	95.9	13.9	3.12	11.0	46.8	106	134	116	47.7	12.2			
125	3.43	9.08	77.4	134	165	132	76.7	9.53	3.35	10.2	17.2	74.8	93.1	65.7	18.9	11.2			
130	3.63	8.55	54.0	111	134	110	53.9	9.05	3.70	9.51	17.3	30.6	55.9	30.2	17.3	10.5			
135	3.79	7.96	28.3	86.3	107	85.5	28.7	7.66	3.98	9.00	15.7	19.3	19.9	19.3	15.8	9.84			
140	3.94	7.24	12.9	52.7	71.4	52.2	13.6	6.72	3.94	8.28	14.0	18.3	18.9	17.8	14.3	9.07			
145	4.10	6.54	11.0	17.7	32.8	17.8	9.24	6.06	4.10	7.72	10.3	16.4	17.5	16.3	13.0	8.51			
150	4.26	5.85	9.96	12.5	13.8	12.7	8.09	5.51	4.25	7.17	9.41	14.7	15.7	14.8	11.9	7.95			
155	4.45	5.02	8.62	10.8	11.4	10.3	7.06	4.87	4.41	6.94	8.56	9.11	14.0	13.1	10.9	7.41			
160	4.62	4.63	7.39	8.94	9.42	6.92	6.16	4.45	4.56	7.03	7.70	8.10	12.1	11.4	9.70	6.82			
165	4.75	4.69	5.60	7.06	7.34	5.85	5.67	4.54	4.71	6.57	8.49	7.16	10.1	9.63	8.28	6.21			
170	4.85	4.74	4.72	4.84	5.10	4.70	4.59	4.59	4.86	5.85	7.22	6.16	8.15	7.78	6.90	5.37			
175	4.81	4.72	4.68	4.66	4.58	4.55	4.53	4.52	4.81	4.84	5.62	6.14	5.58	5.92	5.26	4.52			
180	4.78	4.69	4.65	4.62	4.60	4.52	4.51	4.51	4.84	4.66	4.66	4.60	4.61	4.52	4.51	4.51			

C Range: 0 - 360DEG
C Interval: 22.5DEG
Test Speed: 10.0deg/s
Temperature:25.3℃
Operators:
Test Date:2026-04-10

γ Range: 0 - 180DEG
γ Interval: 1.0DEG
Test System:EVERFINE GO-3000H_V1 SYSTEM V2.00.463
Humidity:65.0%
Test Distance:9.000m [K=1.0000]
Remarks: